

**April
2024**

SOUTHERN NH AREA HEALTH EDUCATION CENTER BLITZMAIL

Visit our [website](#) to
see more online
learning opportunities

STRESS LESS & MANAGE MORE

In this workshop we will learn and practice some tools that we can use, giving us a sense of control and allowing us to let go of things beyond our control.

Stress can take a toll on us all, especially in uncertain times. It is easy to forget that our own self-care is essential to our wellbeing. If we are depleting ourselves, we ultimately have less energy to give to our work or to offer someone else. Over time we can develop stress overload called "compassion fatigue," a set of symptoms that can affect our health, emotions, thoughts, relationships, behaviors, and even how we feel about the world in general.

LEARNING OBJECTIVES

Describe stressors and signs of stress (healthy stress, compassion fatigue, burn-out)

Recognize the link between thoughts, behavior, and emotion.

Identify and practice techniques such as: communication, refocusing, healthy boundaries, and creative expression to lessen stress levels at home and work.

CONTINUING EDUCATION

Nursing:

Southern NH AHEC is an Approved Provider of continuing nursing education by the Northeast Multistate Division (NE-MSD), an accredited approver of continuing nursing education by the American Nurses Credentialing Center's Commission on Accreditation.

1.5 contact hours Activity Number: 1349

Physicians:

The Southern NH Area Health Education Center is accredited by the NH Medical Society to provide continuing medical education for physicians. Southern New Hampshire Area Health Education Center designates this live activity for a maximum of 1.5 AMA PRA category 1 Credit (s)TM. Physicians should claim only the credit commensurate with the extent of their participation in the activity.

Other professionals:

1.5 professional hours of continuing education.



TARGET AUDIENCE

School nurses, nurses, nurse practitioners, pediatricians, family practice physicians, physician assistants, nurse educators, medical assistants, and behavioral health professionals.

REGISTER HERE

WHEN

- Tuesday April 9th, 2024
 - 9:00am-10:30am

WHERE

- Online
 - Zoom link will be sent out prior to session

Lisa Stockwell MEd

Certified Trainer the Trainer and Life Coach.
Motivational Interviewing Trainer and member of MINT

COACHING AND SUPERVISION

Supervisors and managers can gain the skills to support better communication and lay the foundation for strengthening relationships with staff.




Through skill-based training, supervisors learn to:

- Support**
Support staff while also holding them accountable
- Build**
Build constructive, positive relationships
- Respect**
Show respect with staff
- Help**
Help staff be:
 - Better communicators
 - Stronger problem solvers
- Give**
Give quality care

Date and Time:

 April 29th & 30th
8:30am-3:30pm
via Zoom

Cost:

 \$250 per participant

[Register Here!](#)



This training is a unique approach to ending a damaging cycle that often leads to poor relationships, high turnover, and supervisor strain.

Format

This two-day training is offered remotely via synchronous Zoom. Each day of training is 7 hours.

Introductory Training

This training introduces participants to the coaching approach to supervision and teaches four fundamental coaching skills: Active Listening, Self-Management, Self-Awareness, and Presenting the Problem.

Facilitated by: Dulcinea Kaufman & Gayle Davis

Dulcinea Kaufman is an academic nurse educator and leader with over 20 years' experience. She serves as a mentor and coach for many colleagues who hold supervisory roles. Dulcinea is an active member of many state-wide professional collaborative groups seeking to grow the healthcare workforce in NH. She has earned a Bachelor's degree in Nursing, Master's degree in Nursing Administration and Leadership, and a Doctor of Nursing Practice in Leadership and Education.

Gayle Davis is Vice President of Senior Helpers of Southern New Hampshire. Gayle is Senior Gems®, Veterans and Parkinson's Programs certified. She is a certified facilitator of the Virtual Dementia Tour (VDT) and a Certified Dementia Practitioner (CDP). She received her Master Trainer certification in A Matter of Balance, an evidence-based fall prevention program. She serves as the chair of the Seacoast Healthcare Sector Partnership, and a Board Member of New Hampshire Healthcare Heroes.

DIAGNOSTIC AND CLINICAL DECISION MAKING: INTENTIONAL STRATEGIES REQUIRED FOR SUCCESS

Clinicians have so many things to think about as they make clinical decisions that have direct impact on patient outcomes. Join us to learn more about clinical reasoning for yourself, or for you to share with health professions students you are precepting.

Objectives:

- Summarize Dual Process Thinking
- Recognize cognitive biases when thinking
- Practice knowledge management strategies to avoid reasoning pitfalls.

Southern New Hampshire Area Health Education Center is an approved provider with distinction of nursing continuing professional development by the Northeast Multistate Division Education Unit, an accredited approver by the American Nurses Credentialing Center's Commission on Accreditation.

1.0 contact hours Activity Number: 1559

For other professionals: 1.0 professional hours of continuing education.

With:

MARCY AINSLIE

EdD, APRN, FNP



12:00pm - 1:00pm



April 29th, 2024



Live via Zoom

[REGISTER NOW](#)



University of New Hampshire
Advanced Nursing Education Workforce



Southern
New Hampshire
Area Health
Education Center

Upcoming Preceptor Webinars

The New England Nursing Preceptor Academy is offering live webinars for nurse preceptors. These webinars are free, online, 60-minutes and offer CE credit. Attendance is monitored and the webinar must be attended in full. At the conclusion of the webinars, a survey will be available and must be completed to qualify for CE credit. Certificates will be emailed to you within 10 business days.

Sensitive Content in the Healthcare Learning Environment

Wednesday, March 20, 2024, from 11:00 – 12:00pm ET

Presented by Julie West, DNP, MHA, PMHNP-BC

The webinar will discuss the delivery of sensitive subject material in healthcare education, including the use of trigger or content warnings, review the current research on best strategies to mitigate or manage these reactions and how to help students develop the emotional regulation skills needed to ensure they provide safe and quality care even in the face of emotionally laden events.

[Click here to register for *Sensitive Content in the Healthcare Learning Environment*](#)

Precepting and the Science of Learning

Tuesday, April 9, 2024, from 1:00 – 2:00pm ET

Presented by Thomas Van Hoof, MD, EdD, FACMQ

This webinar will describe four evidence-based strategies of the science of learning and describe how applying them while precepting in the clinical setting will help ensure more effective teaching and learning.

[Click here to register for *Precepting and the Science of Learning*](#)

Clinical Performance Remediation: Be Prepared for Those Difficult Conversations

April 25, 2024, from 12:00 – 1:00pm ET

Presented by Amanda Moreau, MSN, RN

This webinar will address clinical performance concerns. Using an interactive and engaging approach, the presenter will survey participants to gauge their current practices in their clinical teaching roles when gaps are identified.

[Click here to register for *Clinical Performance Remediation: Be Prepared for Those Difficult Conversations*](#)

Intentional Teaching/Precepting Challenges Part 2

May 7, 2024, from 12:00 – 1:00pm ET

Presented by Danielle Hebert, DNP, MBA, MSN, ANP-BC

This webinar will take a deep dive into effective precepting utilizing available tools to address commonly encountered barriers. The use of precepting plans will be explored further using case-based methodology.

[Click here to register for *Intentional Teaching/Precepting Challenges Part 2*](#)

Guided Reflective Practice in the Clinical Setting: What you need to know

May 20, 2024, from 12:00 – 1:00pm ET

Presented by Barbara O'Neill, PhD, RN

This webinar will define reflective practice in the context of nursing education and provide evidence of its potential to enhance learning and growth, especially in the development of critical thinking skills needed for clinical practice.

[Click here to register for *Guided Reflective Practice in the Clinical Setting: What you need to know*](#)

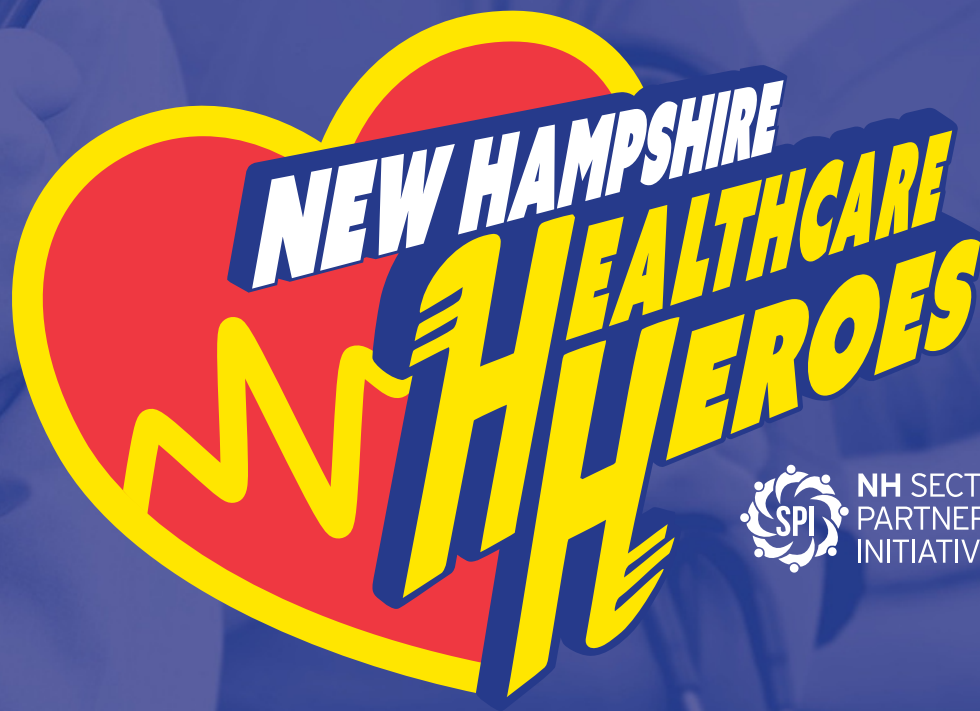
What does Competency in Nurse Preceptorship look like?

May 29, 2024, from 12:00 – 1:00pm ET

Presented by Barbara O'Neill, PhD, RN and Colleen Ryan, PhD, RN, SFHEA

This webinar will discuss the various preceptor competency domains and how the competency descriptors may help nursing preceptors, and those wishing to work in this role, develop and master these competencies.

[Click here to register for *What does Competency in Nurse Preceptorship look like?*](#)



NH SECTOR
PARTNERSHIPS
INITIATIVE

We all know healthcare heroes.

Nomination deadline

May 15, 2024

Who can be nominated?

We welcome nominations for:

- clinical and nonclinical providers
- administrators
- educators
- facilities
- custodial and kitchen staff
- others who provide direct or indirect care to patients and families.

When the pandemic hit, we saw those working in healthcare repeatedly go above and beyond the call of duty. Since late 2020, we honored dozens of these individuals as New Hampshire Healthcare Heroes. The effort was so well received that we want to do it again because their stories are powerful and inspirational and may encourage others to consider a career in healthcare. We're asking YOU to nominate an individual in the healthcare field who has gone above and beyond their role this year.

Selection process

The NH Healthcare Heroes board of volunteers will review the nominations and announce the winners and runners-up for each region in the state

What the heroes get

Healthcare Heroes will be honored in a pinning ceremony hosted with each winner's employer and streamed on Facebook Live. Each winner will receive a banner and customized swag bag from our supporters.

Nominate a Healthcare Hero



snhahec.org/healthcare-heroes



a Point32Health company

Southern NH AHEC

Seacost Public Health Network

Connections for Health IDN 6

Fountain Insurance Agency

NH Charitable Foundation

Seniors Helpers of Southern NH

AmeriHealth Caritas

Please email spi@snhahec.org for more information.

BUILDING THE EQUITY TOOLBOX: A Culturally Effective Organizations Training Series 2024



The Roadmap to High Quality Services for All

We want to ensure that everyone has equal opportunity to thrive. The Culturally Effective Organizations Framework offers an effective approach to turn our goals into broader success. This ongoing series offers an opportunity for deeper exploration of dimensions of each of the Framework elements.

BUILDING THE EQUITY TOOLBOX: A Culturally Effective Organizations Training Series

*Offered at low cost – Scholarships
available*

Learning Objectives:

By participating in this series participants will be able to:

- Implement elements of the Culturally Effective Organizations Framework
- Identify and make use of resources for deeper understanding and action
- Advance equity within their own organizations

Learning Outcome:

- 80% of participants will identify an action they will take as a result of this training

We encourage participation in the whole series; registration for individual sessions is available.

See below for Continuing Education

CLICK THE LINKS BELOW TO REGISTER:

1. [Inclusive Data Practices for Equity-Data Practicum Series](#)
2. [Embracing Diverse Family Structures](#)
3. [Seeking the Why: Equity, Evaluation and the Questions that Matter](#)



Inclusive Data Practices for Equity - Data Practicum Series

April 16, 12:30-2:00 pm

Part 2: Interpretation, Analysis & Mitigation

Learn more about practical applications for interpreting, analyzing and mitigating issues with socio-demographic data. We will examine key barriers and practical solutions that your organization can institute to support staff and clients and build data equity.

April 26, 12:30-2:00 pm

Part 3: Use & Implications

Learn more about practical solutions to the questions that arise related to the internal and external use of socio-demographic data. We will examine key barriers and implications for your organization and the greater community related to data equity.

April 24, 1:00-2:30 pm

I See You: Embracing Diverse Family Structures

This Training explores family make-up and structure to offer practitioners tools to make small but significant changes so that they can communicate to each child and caregiver whose lives they touch – that their family matters. Offered in partnership with NH Children's Trust.

May 15, 12:00-1:30 pm

Seeking the Why: Equity, Evaluation and the Questions that Matter

Evaluation is a key tool for monitoring and improving services across many sectors. When done well, evaluation can provide insight into how systems and programs and programs are working and if they are working equitably. In this session, learn more about the historical application of evaluation tools as well as how to best utilize and frame evaluation to be a tool for driving equity.



**New Hampshire
Equity Collective**

VISIT the [Culturally Effective Organizations Work Group](#) webpage to learn more! For questions, please contact Brianna Ferraro, bferraro@snhahec.org

BUILDING THE EQUITY TOOLBOX: A Culturally Effective Organizations Training Series

Continuing Education

- Nurses

Southern New Hampshire Area Health Education Center is an approved provider with distinction of nursing continuing professional development by the Northeast Multistate Division Education Unit, an accredited approver by the American Nurses Credentialing Center's Commission on Accreditation.

Up to 6.0 contact hours,. Activity Number: 1545 (1.5 contact hours each)

- Physicians

The Southern NH Area Health Education Center, accredited by the NH Medical Society, designates this live activity for a maximum of 6.0 AMA PRA Category 1 Credit(s). Physicians should claim only the credit commensurate with the extent of their participation in the activity.

- Social Workers

Up to 6.0 CEUs pending approval from NASW NH.

- For all other health professionals: 6.0 hours

- For all other participants

A certificate of attendance for up to 6.0 hours will be available to serve your professional development needs.

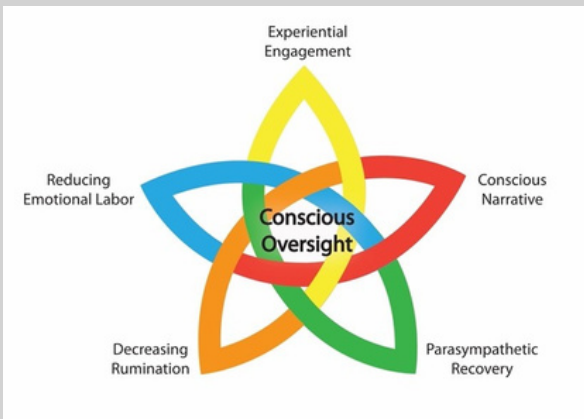
CLICK THE LINKS BELOW TO REGISTER:

1. [Inclusive Data Practices for Equity-Data Practicum Series](#)
2. [Embracing Diverse Family Structures](#)
3. [Seeking the Why: Equity, Evaluation and the Questions that Matter](#)

Strategies to Address Provider Burnout

THE CE-CERT SKILLS: SUSTAINING A CAREER IN THE HELPING PROFESSIONS

Components for Enhancing Career Experience and Reducing Trauma



WEDNESDAY MAY 29TH, 2024
8:30AM - 4:30PM

THE DERRYFIELD RESTAURANT
625 MAMMOTH RD,
MANCHESTER, NH 03104



Brian Miller P.H.d

Brian Miller, Ph.D. provides training and consultation on topics of secondary trauma, trauma informed supervision, and implementation processes nationally and internationally. He is an individual member of the National Child Traumatic Stress Network and chaired the NCTSN Secondary Trauma Supervision Workgroup. He is the developer of the CE-CERT model for intervening with secondary trauma in service providers and the Shielding model of trauma-informed supervision, both of which have been published and disseminated across mental health and child welfare systems. His book, *Reducing Secondary Traumatic Stress: Skills for Sustaining a Career in the Helping Professions* was published in 2022 and is scheduled for a second edition in 2024.

REGISTER HERE

Fee: \$189

For scholarship information email Nadine at ntheberge@snhahec.org

CONTINUING EDUCATION

Nurses

Southern New Hampshire Area Health Education Center is an approved provider with distinction of nursing continuing professional development by the Northeast Multistate Division Education Unit, an accredited approver by the American Nurses Credentialing Center's Commission on Accreditation.
5.25 contact hours Activity Number: 1565

Physicians

The Southern NH Area Health Education Center is accredited by the NH Medical Society to provide continuing medical education for physicians. Southern New Hampshire Area Health Education Center designates this live activity for a maximum of 5.25 AMA PRA category 1 Credit (s)™. Physicians should claim only the credit commensurate with the extent of their participation in the activity.

Social Workers

5.25 CEUs pending approval from NASW NH.

Other Professionals

5.25 CE for all others professionals.

Compassion Fatigue. Burnout. Vicarious Trauma. Secondary Trauma. Terms that overlap and are different in some ways. But all these concepts have one thing in common: they describe the emotional toll that is exacted upon workers in the human services who deal intensively and empathically with persons who are in engaged in an emotional personal struggle. It is a privilege to work in a profession in which caring about those who suffer is the main tool of our work. But caring also takes a toll. Being close to ground zero when people struggle affects the emotional life of those of us who care.

CE-CERT (Components for Enhancing Career Experience and Reducing Trauma) is a suite of skills to support emotional well-being in workers who are exposed to the effects of secondary trauma. But--as in Star Trek, "survival is insufficient."

Ultimately, the goal of CE-CERT is not merely to survive this work: Rather, the goal is to have a vocation that is uniquely and deeply satisfying.

Learning Objectives:

- Identify the Components for Enhancing Career Experience and Reducing Trauma
- Discuss strategies to address provider burnout
- Reflect on the relationship of each of the five skill domains to an individual's own sense of well-being during times of job strain or secondary trauma

TARGET AUDIENCE:

CLINICIANS OF ALL DISCIPLINES, CASE MANAGERS, COMMUNITY HEALTH WORKERS, ADMINISTRATORS AND OTHER MEMBERS OF THE TEAM.

National AHEC Week

March 25th - 29th

See the full stories on our
socials!



NH Needs Caregivers!

NH Needs Caregivers is a program of Southern NH AHEC and was created based on feedback from the Sector Partnerships Initiative (SPI). NH Needs Caregivers partnered with the Dartmouth Rural Health Careers grant to sponsor 7 students in the North Country to get their LNA licensure!



What is AHEC?

The New Hampshire Area Health Education Center Network is a statewide network that is dedicated to improve health care and access to health care, particularly in rural and underserved areas, by enhancing the health and public health workforce of the state.

PHI Trainings

The AHECs have trained 12 people to be Train the Trainers for the PHI Coaching Supervision Curriculum. Our goal is to build capacity to offer this training as an employee retention strategy in NH.



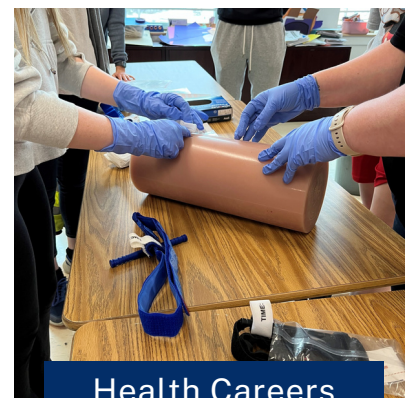
Community Health Workers

To date, 93 CHWs have been enrolled in CHW Advance, a HRSA funded CHW Training Program, and trained by NH AHEC Network.



NH AHEC Health Equity Scholars

AHEC Scholars is designed to provide learning opportunities for students, outside of their core course requirements, with a focus on identify ways to improve or support healthy Granite Staters.



Health Careers Pipeline

Our NH AHEC Network offers a diversity of health career related activities for students from middle and high school to undergraduate and graduate level.

SAVE THE DATE



2024 Infection Prevention Conference

Partnership is the Key

Join colleagues from various disciplines and healthcare settings across NH to:

- Discuss best practices for infection prevention and antibiotic stewardship.
- Receive updates on antimicrobial resistance epidemiology.
- And partner to reduce infections across continuum of care.

Audience:

physicians | pharmacists | nurses | laboratorians | public health professionals | environmental services providers | infection preventionists | veterinary professionals | others interested in infection prevention



SEPT. 13, 2024

8:00am - 4:00pm

Grappone Center, Concord NH

This conference is supported by the Centers for Disease Control and Prevention (CDC) of the U.S. Department of Health and Human Services (HHS) as part of a financial assistance award totaling \$436,817 with 100 percent funded by CDC/HHS. The contents are those of the author(s) and do not necessarily represent the official views of, nor an endorsement, by CDC/HHS, or the U.S. Government.



Earn a
microcredential
badge and CEUs
with each
module!

UNH TELEHEALTH CERTIFICATE



Who Should Join?

- Physicians
- Nurses & Nurse Practitioners
- Occupational Therapists
- Speech Language Pathologists
- Physical Therapists
- Registered Dietitians
- Psychologists
- Social workers

....And more!

Core Modules:

- Fundamentals of Telehealth
- Telehealth Etiquette
- Telehealth Technology

Elective Modules:

- Legal & Regulatory Issues
- Billing & Reimbursement
- Remote Patient Monitoring

The **UNH Telehealth Certificate** program covers a range of telehealth topics, and the **asynchronous structure** lends itself to busy individuals who prefer to complete coursework at their own pace.

MODULES OPEN MARCH 1, 2024

REGISTER
NOW!



Questions? Contact us at:
unh.telehealth@unh.edu



College of Health and Human Services
Center for Digital Health Innovation

NH Health Equity Summit

Achieving Health Equity for All

May 23, 2024

8:00 AM – 3:15 PM

Church Landing, Meredith NH

The Health Equity Summit will provide participants with thought provoking presentations, peer learning opportunities, practical strategies and resources to advance health equity in diverse health care settings.

After the summit, participants will be able to:

- Describe the essential components of a roadmap to operationalize health equity as part of their strategic plan.
- Gain confidence in building the culture, shared understanding, and commitment for health equity throughout their organization.
- Review available tools and resources to advance health equity in their organization.
- Identify strategies and tactics to address social factors of health and health inequities.
- Bring examples of initiatives aimed at advancing health equity back to their organizations.

Who should attend: Health care staff and providers from administration, health equity and DEI, population health, community health, patient and family engagement, clinical staff.



[Click Here to Register](#)

For more information, agenda and speakers visit:

<https://healthynh.org/events/2024-health-equity-summit>
or email Beth Gustafson Wheeler: bwheeler@healthynh.org



Keynote

Bridging the Gap: A Strategic Blueprint for Health Equity

Jermaine Moore

Founder and Principal Consultant
The Mars Hill Group



Afternoon Keynote

Making the Connections

Nancy Myers

VP, Leadership and System Innovation
American Hospital Association

Session Topics

Hospital Experiences in Advancing Health Equity

The Leaders Role in DEI

The Role of Data in Equity: Examining New Frameworks

Identify, Awareness, and Belonging

Building and Leveraging Community Partnerships

Transgender Populations: Communication and Care

Patient Family Engagement Using a Health Equity Lens

Applying a Health Equity Framework to Patient Safety Events
and Root Cause Analysis

Nursing: Southern New Hampshire Area Health Education Center is an approved provider with distinction of nursing continuing professional development by the Northeast Multistate Division Education Unit, an accredited approver by the American Nurses Credentialing Center's Commission on Accreditation.

4.25 contact hours Activity Number: 1555

Physicians: This activity has been planned and implemented in accordance with the accreditation requirements and policies of the Accreditation Council for Continuing Medical Education (ACCME) through the joint providership of Southern NH AHEC and Foundation for Healthy Communities. The Southern NH AHEC is accredited by the NH Medical Society to provide continuing medical education for physicians. Southern New Hampshire Area Health Education Center designates this live activity for a maximum of **4.25 AMA PRA category 1 Credit (s)**[™]. Physicians should claim only the credit commensurate with the extent of their participation in the activity.

Social Workers: 4.25 CEUs pending approval from NASW NH.

For other professionals: **4.25 professional hours of continuing education.**

For all other participants: A **certificate of attendance for up to 4.25 hours** will be available to serve your professional development needs.

Partner:



Supported by the
Medicare Rural
Hospital Flexibility
Program (Flex) Grant

Motivational Interviewing:

A CONVERSATION ABOUT CHANGE



What is it?

Motivational Interviewing (MI) is a very specific way of having a conversation about change. The process of Motivational Interviewing discovers each person's values and interests. It is designed to decrease barriers and increase readiness to make a change. It provides concrete, person-focused tools that help to address ambivalence and engagement both on an individual level and at a group level.

These interactive training sessions will help you learn how to bring awareness to individuals about the discrepancy between their current behavior and their future goals. You will learn how to assist them to make meaningful healthy lifestyle changes.

Learning Objectives:

After this session, participants will be able to:

- Describe active listening and its impact on the behavior change
 - Explain the MI spirit, four processes and mind-set that guide MI conversations
 - Discuss discord and how it impacts the relationship
 - Identify how to effectively provide information and suggestions
 - Demonstrate the use of one of more of the micro skills of OARS
 - Describe sustain talk, change talk and commitment language
- Practice exercises

Cost: \$45

For questions please contact:
Brianna Ferraro @
bferraro@snhahec.org

Continuing Education

Nurses:

The Southern New Hampshire Area Health Education Center is an approved provider with distinction of nursing continuing professional development by the Northeast Multistate Division Education Unit, an accredited approver by the American Nurses Credentialing Center's Commission on Accreditation.
5.5 contact hours. Activity Number: 1388

Physicians:

The Southern New Hampshire Area Health Education Center designates this live activity for a maximum of 5.5 AMA PRA Category 1 Credit(s)[™]. Physicians should claim only the credit commensurate with the extent of their participation in the activity.

Social Work:

This program has been approved for 5.5 Category A Continuing Education Credits by the National Association of Social Workers, NH Chapter.
CE #3828

For other professionals:

5.5 professional hours of continuing education

Target Audience

School nurses, nurses, nurse practitioners, pediatricians, family practice physicians, physician assistants, nurse educators, medical assistants, and behavioral health professionals.

Register Here

5/30/24 & 6/6/24

9:00am-12:00pm

Live Training via Zoom

Space is limited. The use of video and audio and attendance to both sessions is required in order to receive credit.

Lisa Stockwell, MEd

Certified Trainer the Trainer and Life Coach.
Motivational Interviewing Trainer and member of MINT



JEAN SCHOOL OF NURSING & HEALTH SCIENCES

Saint Anselm College Continuing Nursing Education

8th Annual New England Public Health Conference

Challenges and Changes in Public Health Practice



Saint Anselm College

Events Center

May 15-16, 2024

8:30-4pm

up to

11.75 Contact Hours

A TWO DAY IN PERSON EVENT

Saint Anselm College is approved as a provider of nursing continuing professional development by the Northeast Multistate Division Education Unit, an accredited approver by the American Nurses Credentialing Center's Commission on Accreditation

Scan for
Detailed Brochure
and to Register



OR contact Gina at
ggulinopayne@anselm.edu
603-641-7086



2023 New Hampshire Preceptor Recognition Awards

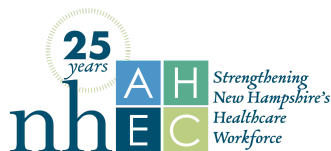
Please join the NH AHEC Network in recognizing some extraordinary preceptors who are engaging in teaching and learning with our health professions students. We appreciate their contribution to building our health care workforce pipeline.



Scan the QR code or
follow the link to see the
full book of awards.

[Click Here to View the Full Book](#)

Presented by the
New Hampshire
Area Health Education Center
Network



NEW HAMPSHIRE COMMUNITY HEALTH WORKER SURVEY



Survey administered
by Southern NH Area
Health Education
Center and the CHW
Center for Research
and Evaluation
Nov-Dec 2023



CHWs

COMMUNITY HEALTH WORKERS

are front line public health professionals who share life experience, trust, compassion, and cultural and value alignment with the communities they serve.



42%

of CHW's work in clinical settings.
58% work in community based organizations, local health departments, schools, insurance providers, and family resource centers.



10 CORE ROLES

CHWs are most likely to provide **care coordination**, **system navigation** and **advocacy** on behalf of individuals and communities.

“ I really enjoy being a CHW, however I think we need to be appreciated more for the difference we make...”

-CHW Respondent



NH CHWs

often work with people who are experiencing homelessness, people with substance use disorders, or people with disabilities



Community Health Workers

CHW APPRENTICESHIP

CHW ADVANCE! APPRENTICESHIP

CHW Advance! is a HRSA funded program to enhance the CHW Workforce. The CHW Apprenticeship provides the opportunity for increased training and skill-building for CHWs to support improved outcomes for people in our communities.

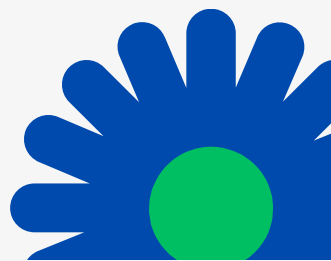
Eligibility: New and existing employed CHWs in NH.

APPRENTICESHIP ELEMENTS

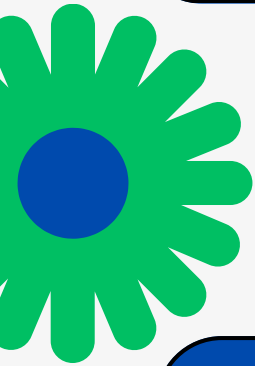
The CHW Apprenticeship is a one year program that provides:

- 144 Hours of paid training (Related Instruction).
- 2000 Hours on-the-job training
- Mentoring Support
- Regular Competency Assessments
- Up to \$1,500 to cover mileage
- \$7500 Stipend

Contact Carli Hughes, CHW at chughes@snhahec.org
Visit the website: <https://www.snhahec.org/chw-advance.html>



Community Health Workers



UPSKILLING

INCREASE YOUR SKILLS

CHW Advance! will pay for the training. Pick from a list of our approved trainings or contact us to approve a training of your choice.

CHW ADVANCE!

CHW Advance! is a HRSA funded program to provide training and new skills to CHWs living in NH and VT.

RECEIVE A STIPEND

In addition to CHW Advance! paying for the training, you can receive a \$1000 stipend to support you in your training/upskilling.

TO LEARN MORE AND APPLY:



<https://www.snhahec.org/chw-upskilling.html>



Steps for Upskilling:

1. Identify a course you would like to take
2. Register with CHW Advance! ([Click Here](#))
3. Receive code to register for course
4. Complete course & send us your certificate
5. Submit required CHW Advance paperwork and receive your stipend
6. Use your new skills to grow your career

TRAINING OPTIONS

- Recovery Coach Academy
- Health Coaching
- Enhanced Care Coordination
- Child, Youth and Family Systems and Behavioral Health
- Diabetes Community Care Coordinator
- Online training series with MCD Global
- Choose your own training!

For more information and to apply please visit our website:

<https://www.sنهاhec.org/chw-upskilling.html>

